

ALICE SINGS

This Must Be The Place

LOW

LOW

**A**

dum bup ba - dum-bup - ba - da - dum-bup ba - dum-bup - ba - da -

**B**

dum bup ba - dum-bup - ba - da - dum-bup ba - dum-bup - ba - da

dum-bup no - thi - ing

**C**

Hi - o - oh i got plen-ty of time oh wo-ah

Hi - o - oh you got light in your eyes and you're

**D**

stand i-ing here be side me I love the pass-ing of time oh-wo-ah

ne-ver for mo-ney al-ways for love co-ver up and say good-night

**E**

dum bup ba - dum-bup - ba - da - dum-bup ba - dum-bup - ba - da -

37

dum bup ba - dum-bup - ba - da - dum-bup ba - dum-bup - ba - da -

39

dum bup ba - dum-bup - ba - da - dum-bup ba - dum-bup - ba - da -

41 **F**

dum bup ba - dum-bup - ba - da - dum-bup ba - dum-bup - ba - da -

43

47

51

55

dum bup where I - ll

57 **G**

be Hi - o - oh we drift in and out oh - wo-ah

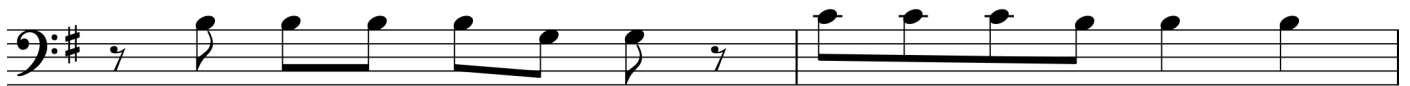
61

Hi - o - oh sing in to my mouth out of

65 **H**

all those kinds of pe - ople you got a face with a view oh wo-ah

69



i'm just an an - i - mal loo - king for a home and

71



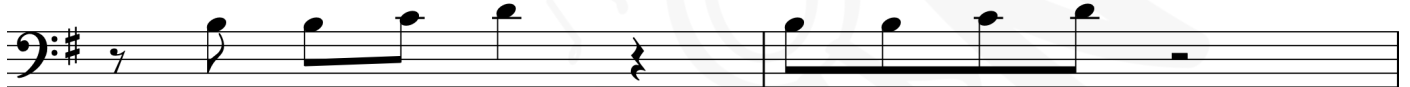
share the same space for a mi-nute or two and you love me 'till your heart stops

75



love me 'till i'm de - ad

77



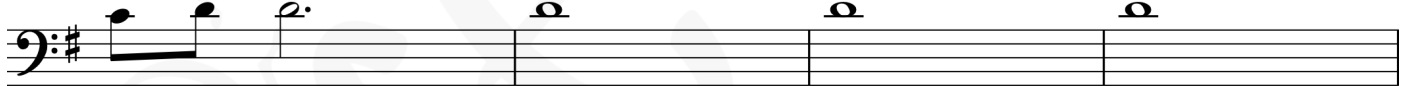
eyes that light up eyes look through you

79



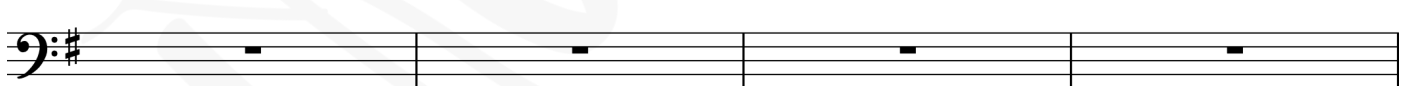
co - ver up the blank spots hit me on the head like a

81



hee

85



89



home is where i want to be but i guess i'm al rea-dy there I come

93



home she lif-ted up her wings i guess that this must be the palce



